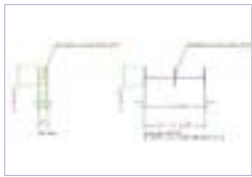


# BENTLEY® AUTOPLANT® STRUCTURAL DETAILER

The ultimate structural tool that automates the generation of 2D fabrication drawings, including single-part details from a 3D model



Automatically generate shop fabricated assembly drawings.

Bentley® AutoPLANT® Structural Detailer™ is the ultimate structural tool. It provides all of the features of AutoPLANT Structural Modeler and AutoPLANT® Structural Engineering™, as well as features to automate the generation of 2D fabrication drawings. AutoPLANT Structural Detailer provides a mechanism to output NC, PPS, SDF and ERP data directly from the 3D model.

## Single-part Detailing

With AutoPLANT Structural Detailer, you can now automatically generate single-part details from a 3D model and perform detailing functions with the detail center. The detail center provides you with a “drag-and-drop” creation process: simply select an individual member from the parts tree, assign the desired style, process the part(s) through the detail center and drag it into the AutoCAD® drawing window. AutoPLANT Structural Detailer then automatically generates the appropriate detail in the drawing for that member.



Structural Detailer offers multiple drill patterns and automatic bolting in the same process.

## Output NC Data

The geometry data of structural 3D with NC is imported directly from the 3D model and saved in project-related directories according to position number. Further processing and direct access of the NC machine is then carried out using post-processors of the respective machine manufacturers.

## Unfold/Unwind Pipes

The Unfold Pipes command provides a mechanism to unwind/unfold a pipe with cut-outs and insert the result into the active user coordinate system (UCS). For example, after exiting the dialog, you can click on the tube or pipe that is to be unwound or developed and select the desired operation. You can position it freely anywhere in the model and process it further, if desired.

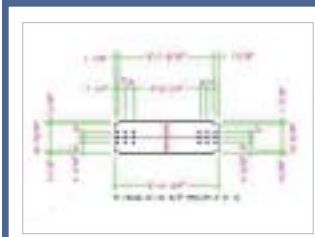
## Output PPS/ERP Data

Many construction projects require information exchanges with a project, planning and control system (PPS) or Enterprise Resource Planning (ERP) system. Once a parts list has been created in AutoPLANT Structural Detailer, it can then be exported to a PPS/ERP system.



Compile structural element data for export to a PPS/ERP system.

## BENTLEY AUTOPLANT STRUCTURAL DETAILER AT-A-GLANCE



Automatically generate shop fabricated piece part details.



The Unfold Pipes command provides a mechanism to create rolled tube development details.

### Cloning

- Ability to create a connection such as an endplate, shear tab or web angle and then clone this connection across multiple joints in one operation

### Block Center

- Ability to define and create typical non-structural design elements and retrieve these for automated insertion on existing model structural elements
- Customizable block description mechanism for organizing and searching your block libraries

### Positioning

- Fully user-definable element "positioning" feature
- Part search by position number within model
- Ability to position assemblies separately from parts

### Drilling/Bolting

- Supports radial drilling patterns
- Countersunk and stepped hole creation
- Creation of "bolt styles" for reuse. Bolt styles contain definition for nuts washers, lock-nuts

### 2D Detail Center

- Xref recognition during creation of 2D details (structural elements and ACIS solids only)
- Automatic 2D section cuts on parts within the model are automatically generated by the detail center
- Automatic "shortening" of elements when generating piece part and assembly details. Allows parts to be shortened in length but have all other aspects maintain detail view scale for better placement on 2D detail sheets
- Detail Center Express wizard to automate detailing of all parts, assemblies and frame details

## BENTLEY AUTOPLANT STRUCTURAL DETAILER SYSTEM REQUIREMENTS

- Processor:  
Pentium® II 500MHz
- Operating System:  
Windows® 98, 2000 or  
Windows NT® 4.0 SP6
- Software:  
AutoCAD® 2000, 2000i  
or 2002
- Memory:  
128MB RAM
- Disk Space:  
650MB (1GB recommended)

## CALL TODAY FOR MORE INFORMATION

Bentley Systems, Incorporated, is a global provider of collaborative software solutions that enable our users to create, manage and publish architectural, engineering and construction (AEC) content. As a part of those solutions, Bentley provides professional services including implementation, integration, customization and training.

Visit us on the Web for more information about Bentley solutions and services. [www.bentley.com](http://www.bentley.com)

**Bentley North American Headquarters**  
Bentley Systems, Incorporated  
685 Stockton Drive  
Exton, PA 19341 USA  
Phone: +1 800 BENTLEY (+1 800 236 8539)  
Outside the US +1 610 458 5000  
Fax: +1 610 458 1060

**Bentley International Headquarters**  
Bentley Systems Europe B.V.  
Wegalaan 2  
2132 JC Hoofddorp  
THE NETHERLANDS  
Phone: +31 23 556 0560  
Fax: +31 23 556 0565

To find a local Bentley office, please visit [www.bentley.com/corporate/contacts](http://www.bentley.com/corporate/contacts).

